

Triton CAFS Midship

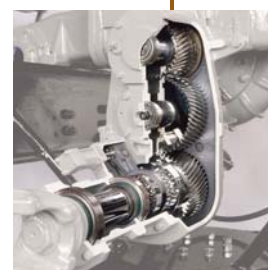
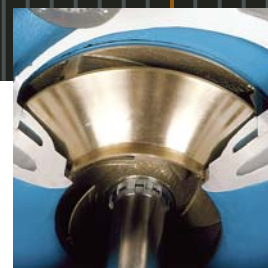
***Efficient – Lightweight, Low Profile,
Compact Design***

Seagrave's Triton integrated CAFS features an efficient rotary screw air compressor rated at 220 cfm at 125 psi, providing the highest output on the market.

With Auto "On" air compressor and optional Auto "On" foam proportioner, all it requires is a simple flip of an air injection switch for each out let to turn a discharge from flowing plain water to CAFS.

Triton CAFS Key Features

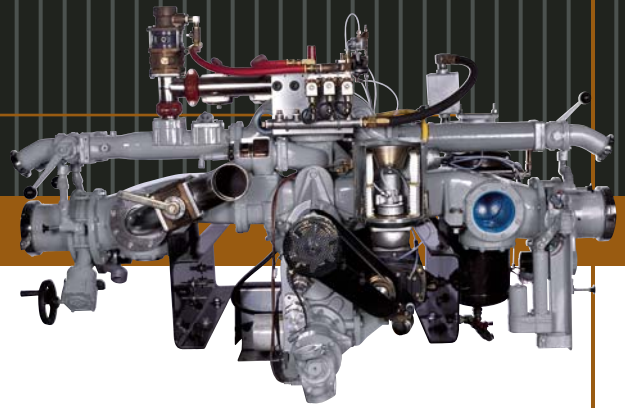
- Compressor Powered Through a Hot-shift, Electric Clutch
- Class A Foam Simply Flip a Switch
- Complete Stainless Steel Foam System Manifold with High Flow Elbows and Connections
- Silicon Carbide Mechanical Seal - Will Not Leak and will Tolerate Running Dry
- Transmission rating - 20,000 ft. lb.
- 5 Year Warranty



Seagrave



Triton CAFS Midship



Features and Specifications

1750 GPM at 2000 ft.

The lightweight, low profile, compact designed Triton CAFS produces more GPM per pound than any other pump on the market. It is rated up to 1750 GPM at an altitude of 2000 ft., with 220 cfm.

Silicon Carbide Mechanical Seal

The stationary face of our mechanical seal is made from Silicon Carbide, an extremely hard and heat dissipative material, which resists wear and dry run damage much better than conventional Ni-resist and Tungsten Carbide materials. This will ensure that the seals will not leak, reducing the risk of failure.

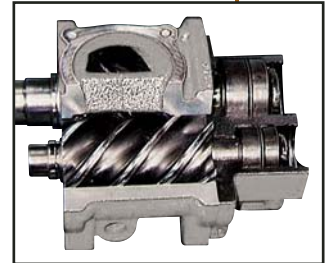
Triton CAFS Transmission

The strongest gearbox on the market.

- CAFS Transmission with Electric Hot-shift Clutch
- Rated at 20,000 ft. lbs.
- AutoCool feature reduces operating temperatures for longer life
- Easy Access Dip Stick
- Helical Cut Gear
- Bullet Nose Sliding Clutch Gear
- Large Oil Reservoir for Extended Oil Life



46"H x 76"W x 40"L
2,200 lbs.



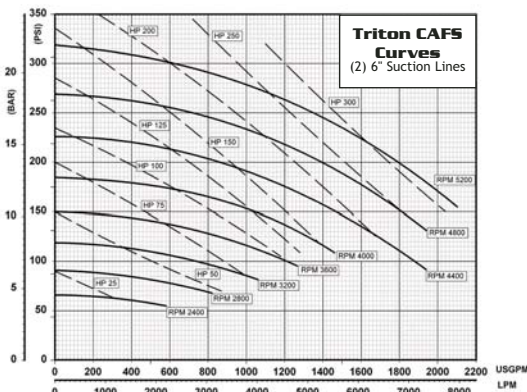
Triton's efficient rotary screw air compressor is rated at 220 cfm at 125 psi, providing the highest output on the market.



Silicon Carbide Mechanical Seal is extremely hard and heat dissipative, which resists wear and dry running damage

Engine				Flow Rating, GPM - Gear Ratio			
Model	HP	Torque lb-ft/rmp	Gov. RPM	1000	1250	1500	1750
C7	350	860 @ 1400	2400	2.67	2.67	2.67	2.12
C9	400	1100 @ 1400	2100	2.67	2.67	2.67	2.67
C13	525	1650 @ 1200	2100	2.67	2.67	2.67	2.67
ISL	400	1200 @ 1300	2200	2.67	2.67	2.67	2.67
ISM	500	1550 @ 1300	2100	2.67	2.67	2.67	2.67

Call for additional engine combinations.



Triton's Commander control system. Indicates and operates all CAFS functions and system information



Seagrave Fire Apparatus, LLC

Uncompromising Quality Since 1881

Phone: 715-823-2141

Fax: 715-823-5768

Clintonville, Wisconsin

www.seagrave.com